



By Darling Salon
@darlingsalon

FORMULA

45g
7/75

15g
6/75

60g
6%



+



+

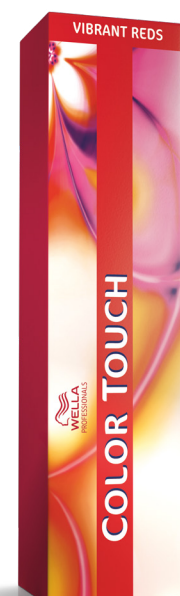


**COLOR
ROOTS**

15g
8/43

15g
9/3

60g
1.9%



+



+



**COLOR
LENGTHS**

Apply to roots first,
develop and remove.

Apply Color Touch formula
through lengths and ends.



TIP

Blow dry with EIMI Extra Volume for head-turning volume and perfect body with strong hold.